

CLIO FW-02 AND CLIO 12 INSTALLATION

① MINIMUM PC CONFIGURATION

The CLIO FW-02 USB interface running the CLIO 12 software can be installed in any personal computer with the following minimum system requirements:

- Processor: single-core @ 2GHz clock or dual-core (suggested)
- One free USB 2.0 port
- 1024x786 video adapter
- Microsoft Windows XP, Vista, 7, 8 or 10

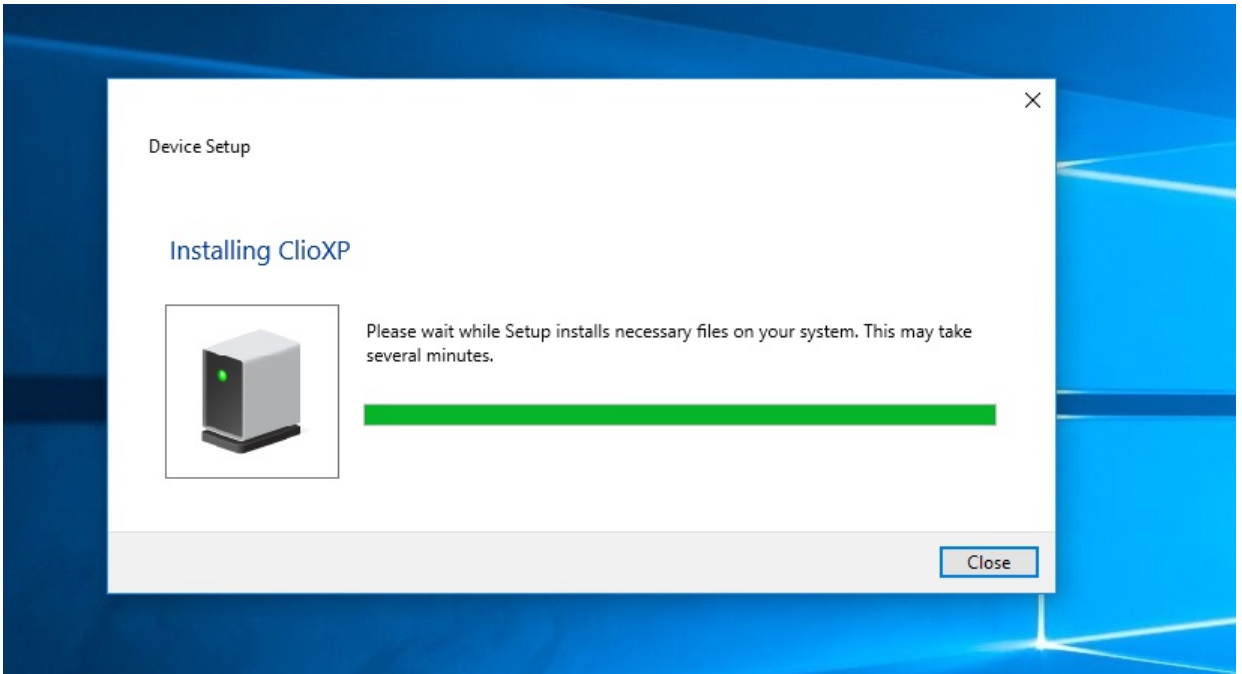
➡ **BE SURE TO HAVE ADMINISTRATIVE RIGHTS WHEN INSTALLING!**

② FW-02 DRIVERS INSTALLATION

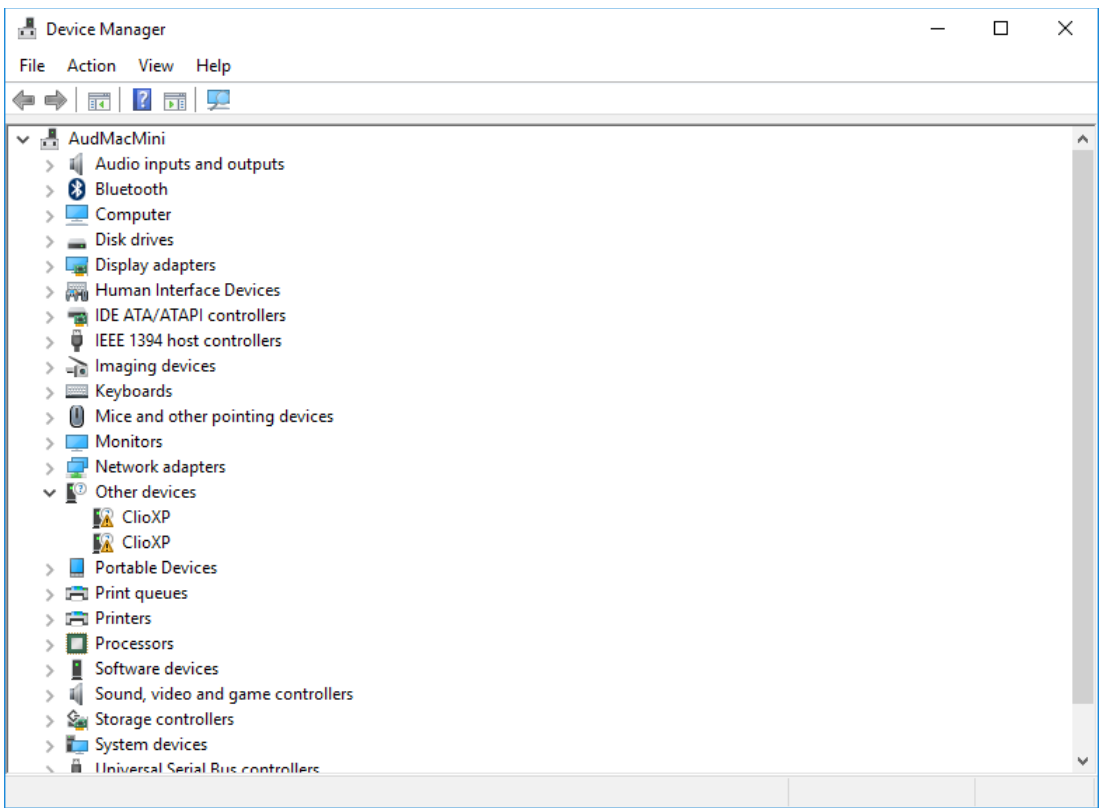
To install the FW-02 drivers in your computer you should follow the instructions presented below:

0) If enabled, disable Secure Boot.

- 1) Connect the FW-02 to a free USB 2.0 port on your PC and power it with its 12V supply. You should hear the classical sound of plug and play devices.
NOTE: ClioXP is the nickname of the FW-02 device seen by Windows.

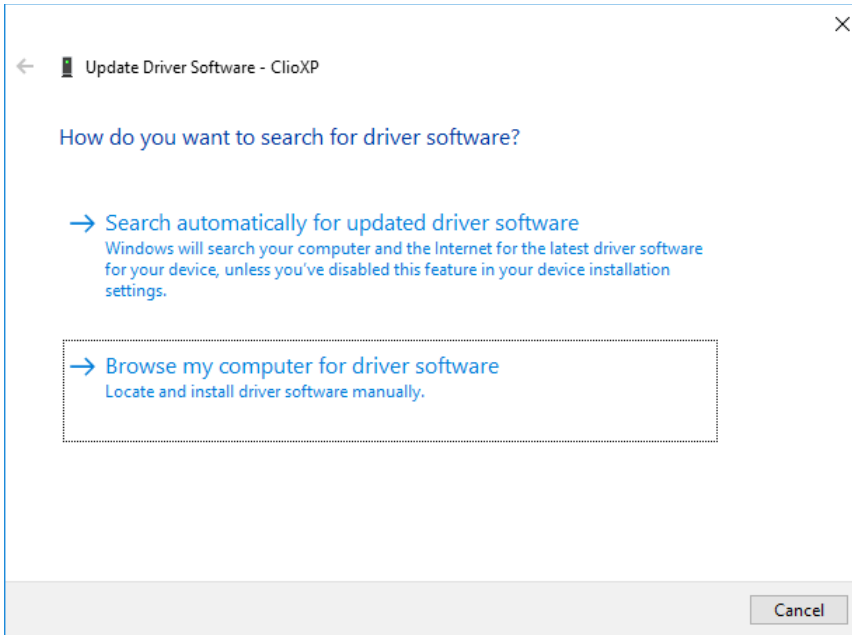


- 2) After the initial automatic driver detection only one device should be found by Windows, the USB Composite Device; two more devices, named ClioXP should be installed manually. Open Device Manager (type `devmgmt.msc` from Run prompt or click Control Panel>System>Device Manager); you should find this situation:

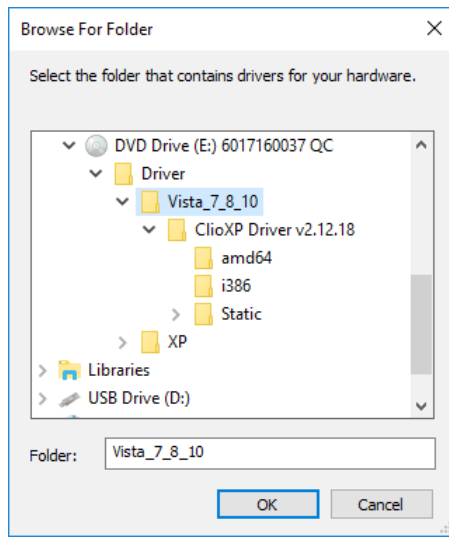


3) Insert the CLIO 12 installation CD-ROM in the PC.

4) Right-Click on each ClioXP device under Other Devices and choose Update Driver Software. At the successive prompt:

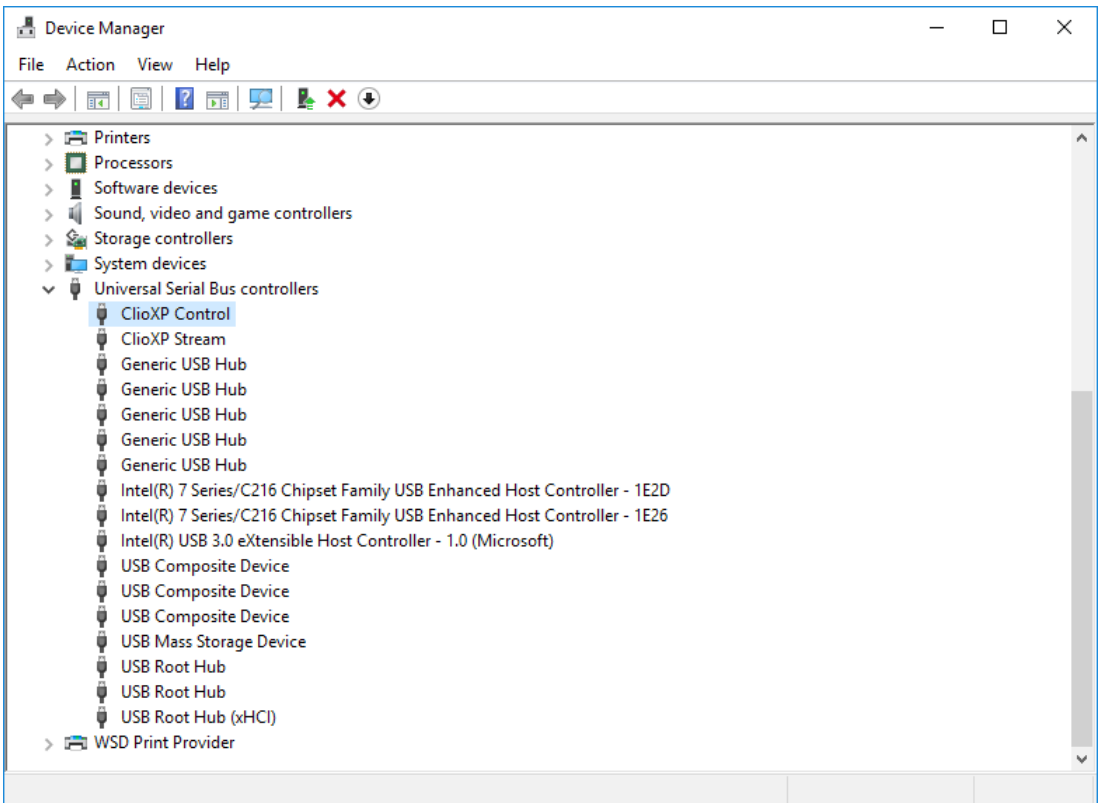


5) Browse your computer and point to the folder inside the installation CD where the proper drivers are located (for example \Driver\Vista_7_8_10).



Ignore any Microsoft's warning message about Digital Signature or Publisher and reach the end of the wizard.

6) You will get the ClioXP Control and ClioXP Stream entries within Device Manager:



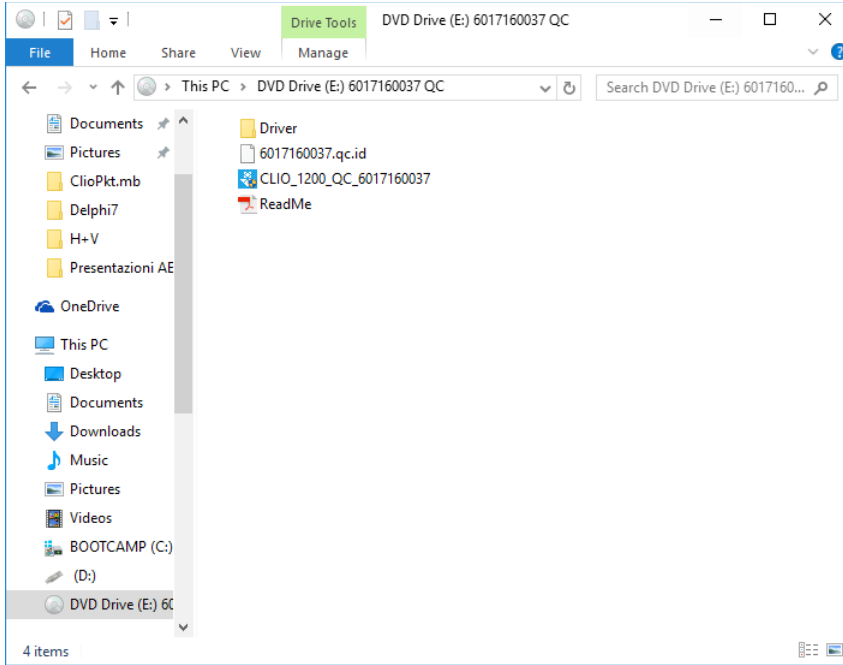
🎉 **Your driver installation was successful!**

3 CLIO 12 SOFTWARE INSTALLATION

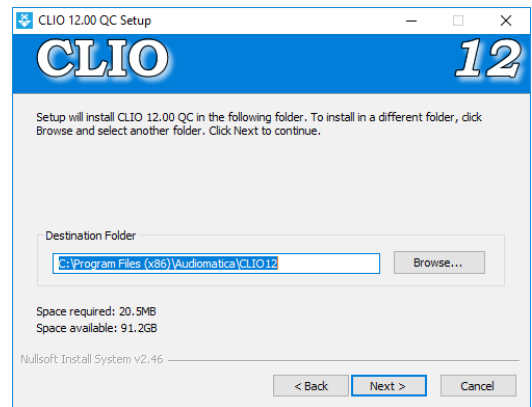
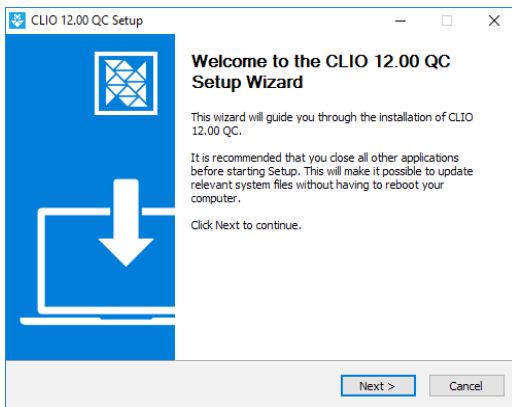
The CLIO software is provided either on its own CD-ROM or, in electronic format, as a single, self-extracting, executable file.

To install the CLIO 12 software in your computer you should follow the instructions presented below:

1) Insert the CLIO 12 CD ROM in the computer.



3) Choose CLIO 12 installer to start installation.



The procedure is completely automatic and will only request you to accept the Software End User's License Agreement and input some information in order to correctly install CLIO 12; the software installer will also check your operating system version.

After successfully completing this procedure take note of the installation directory of CLIO (usually C:\Program Files\Audiomatica\CLIO12 or C:\Program Files (x86)\Audiomatica\CLIO12).

4 READ CAREFULLY CHAPTER 3 OF THE USER'S MANUAL!